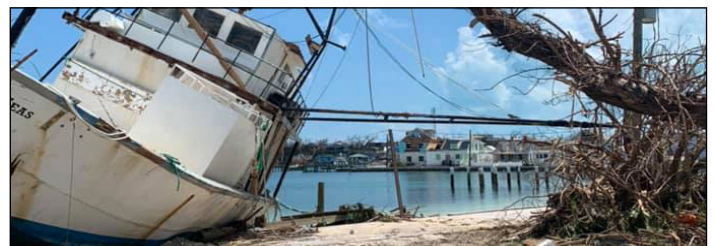
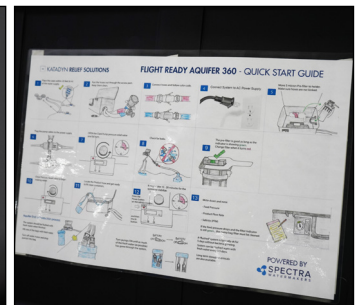


Aquifer 360 Expedition - Reliable, High-Output Watermaker



PRODUCT SPECS

Article Number	AF-360-EX-FL
Salt Rejection	99.5%
Technology	High energy-efficient Reverse-Osmosis (RO)
Production per Day	136 lpd (360 gpd)
Production per Hour	56 lph (15 gph)
Recovery Rate	10%
Feed Water Source	Fresh, brackish, seawater
Voltage Options	24v DC
Power	220W
Watt per Liter	4.5
Water Temperature Limits	Max 37°C (110°F) / Min 2°C (36°F)
Weight	44 kg (96 lbs)
Case Dimensions	2 cases - 79 cm x 52 cm x 40 cm (31" x 20.5" x 15.5")

FEATURES

- Dual Shurflo submersible feed pumps for reliability, capable of pumping feed water 25' straight up, a 40% increase over the standard Aquifer feed pump
- Simple analog controls and gauges, no electronics
- Super efficient, requiring as little as 220 watts to purify seawater
- Fixed freshwater recovery ratio for easy operation, optimized for long RO membrane life
- Perfectly pairs with wind, solar or battery power due to high energy efficiency and 24V DC power usage
- Heavy duty, military grade, shock and impact resistant plastic roller cases
- Composite construction for superb corrosion resistance
- Membranes are protected from overpressure and scaling by design and can last 8-10 years or more with proper maintenance
- Spectra's renowned customer service and support with technicians available by Skype, phone and e-mail in North America and Europe

Aquifer 360 Expedition - Reliable, High-Output Watermaker



1	Clark Pump Energy Recovery Device
2	Reverse Osmosis Membranes
3	Salinity Monitor
4	Prefilter Assembly
5	Optional AC Power Supply
6	Mil-Spec Plastic Case
7	Flow and Pressure Gauges
8	Submersible Feed Pumps (2)
9	Water Bags (2)

SYSTEM SHIPPING LIST

System
AF-360-EX-FL
Included Components
Clark Pump pressure intensifier, 10% recovery rate
Spectra 1000 psi composite pressure vessel with seawater RO membrane
Dual Submersible Shurflo Feed Pumps
2.5" X 10" 5 micron pre-filter (1)
Analog gauges and controls
2 Mil-Spec plastic cases
Product, Feed and Brine hoses
Installation Kit
Filter Wrench
Hand-held TDS/Salinity Meter
User Manual



*Room in pump case for 24 filters

Aquifer 360 Expedition - Reliable, High-Output Watermaker

SPARE PARTS AND CONSUMABLES

Article Number	Product
FT-FTC-5	5 micron cartridge filters
KIT-HP-S&O	Seal and O-ring kit for Clark Pump
EL-FP-DP	Diaphragm drive for feed pump
KIT-HP-10UD	Clark Pump rebuild kit
KIT-CHEM-SC2	Spectra alkaline membrane cleaner
KIT-CHEM-SC3	Spectra acid cleaner
KIT-CHEM-SC1	Spectra membrane preservative

OPTIONAL COMPONENTS

Article Number	Product	Description
KIT-AF-FLRPS3P24	3 Solar Panel Power Supply Case	Power supply case with options for 12/24v DC, 100-240 AC 50/60 Hz as well as included Solar Panels. Compatible with AF-360-EX-FL.
KIT-HHM	Hand-held conductivity tester with calibration solution	Extra handheld TDS meter.
EL-SLT-INLPMNT2	Inline Salinity Monitor	For digitally testing total dissolved solids (TDS) of product water, which is any salt, metal, or mineral in the water.
KIT-AF-SPK	Aquifer Support Kit 6ea, 5 Micron filters, 2 ea, chemicals for storage, alkaline and acid cleaning	A full complement of supplies for an Aquifer unit in the field. Recommended for Aquifer deployment.
KIT-AF-UIP24V	Universal voltage kit 100-240vac 50/60Hz	Adds AC power versatility to Aquifer units.

List of all Portable Desalination and Purification Systems

AQUIFER SERIES

Article Number	Product	Product Information	Output
AF-200-DC	Aquifer 200	Highly portable water purification/desalination system. External power required.	30l/h, 8gph
AF-200-EX-FL	Aquifer 200 Expedition	External power required, compatible with optional Solar Power Pack (KIT-AF-FLRPS2P24).	30l/h, 8gph
AF-200-PPS	Aquifer 200 Power Pack Solar	Includes Solar Panel. A self-sufficient offgrid water purification/desalination solution that fits in a single case.	30l/h, 8gph
AF-FLR-200	Aquifer 200 Flight Ready	Complete portable watermaker system, 3 cases include watermaker, feed pumps and solar panels. Weight managed for commercial flights.	30l/h, 8gph
AF-360-EX-FL	Aquifer 360 Expedition	Portable with higher output. External power required, compatible with optional Solar Power Pack (KIT-AF-FLRPS3P24).	55l/h, 15gph
AF-FLR-360	Aquifer 360 Flight Ready	Complete portable watermaker system, 3 cases include watermaker, feed pumps and solar panels. Weight managed for commercial flights.	55l/h, 15gph
KIT-AF-FLRPS2P24	2 Panel Power Supply Case	Power supply case with options for 12/24v DC, 100-240c AC 50/60 Hz as well as included Solar Panels. Compatible with AF-200-EX-FL.	n/a
KIT-AF-FLRPS3P24	3 Panel Power Supply Case	Power supply case with options for 12/24v DC, 100-240c AC 50/60 Hz as well as included Solar Panels. Compatible with AF-360-EX-FL.	n/a

LANDBASED SERIES

Article Number	Product Information	Watts Used*	Output
LB-400	Compact, modular purification/desalination	300	64l/h, 17gph
LB-1800F-220M	Framed watermaker with manual controls	800	285l/h, 75gph
LB-1800C-220	Framed watermaker with automated Spectra Connect controller	800	285l/h, 75gph
LB-2800F-220M	Framed watermaker with manual controls	1200	435l/h, 115gph
LB-2800C-220	Framed watermaker with automated Spectra Connect controller	1200	435l/h, 115gph
LB-10000-F-MS	Framed watermaker with manual controls	3800	1,575l/h, 420gph
LB-10000F-230S	Framed watermaker with automated Spectra Connect controller	3800	1,575l/h, 420gph
LB-20000 Container	Containerized community-level watermaker built into a standard shipping container. Ready to combine with a solar power system.	< 8kW	3,155l/h 833gph
LB-4000F-220M	Brackish Water system, framed with manual controls	1200**	680l/h, 180gph
LB-4000C-220	Brackish Water system, framed with automated Spectra Connect controller	1200**	680l/h, 180gph
LB-14000F-M-BR2S	Brackish water system, framed with manual controls	5300**	2,208l/h 583gph
LB-14000F-230	Brackish water system, framed with automated Spectra Connect controller	5300**	2,208l/h 583gph

*Using Seawater feed at 32,000 ppm and 25°C (77° F).

**25,000 ppm maximum salinity for these brackish water systems

Katadyn Desalination, LLC

2220 S. McDowell Blvd | Petaluma, CA 94954 | U.S.A.

Tel: +1 415 526 2780 | Fax: +1 415 526 2787

sales@spectrawatermakers.com | www.spectrawatermakers.com

Spectra reserves the right to make changes to this fact sheet.